



82 SERIES

POWER SWITCHES

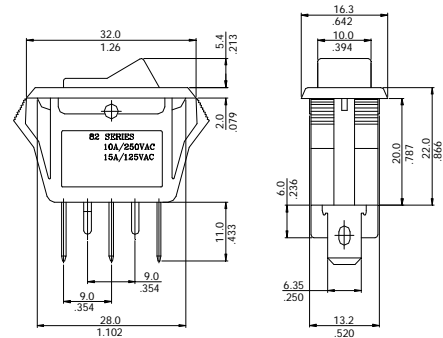
Features:

- Single pole
- Optional illumination
- .250 Tab or solder lug
- Variety body & rocker color

Technical data:

Rated current	15A/125VAC, 10A/250VAC
Dielectric Strength	1500VAC/1minute
Insulation Resistance	$\geq 100 \text{ M}\Omega$, 500VDC
Operational force	400~800g
Electrical Life	10^4 Cycles
Ambient temperature	-20°C ~ +85°C
Mounting Type	Snap - In
Agency Approval	UL, CSA, TUV, CQC

Outline Dimensions:



Recommended Panel Cutout:

Panel Hole	PANEL HOLE DIMENSION TABLE		
	X<PANEL THICKNESS>	Y	Z
	0.75~1.25mm	$28.5_{-0.1}^{0.1}$	$13.5_{-0.1}^{0.1}$
	1.25~2.0mm	$28.6_{-0.1}^{0.1}$	$13.5_{-0.1}^{0.1}$
	2.0~3.0mm	$28.8_{-0.1}^{0.1}$	$13.5_{-0.1}^{0.1}$

Ordering Information:

Typical Part No. ► 82 1 1 -3 1 2 2 1

1. Model No:

82=Non Illuminated 82L=Illuminated

2. Switch Function:

1=ON-OFF

3. Rating:

1= 15A/125VAC, 10A/250VAC 2=10A/250V~

4. Terminal:

1=.250 Tab W/ Divider 2=.250 Tab W/O Divider 3=Solder Lug W/ Divider 4=Solder Lug W/O Divider
5=.250 QC W/ Divider 6=.250 QC W/O Divider

5. Case Color:

1= Black 2= White 3= Gray 4= Ivory 5= Blue 6=Yellow 7=Green

6. Rocker Color:

6.1. Clear Rocker: 1=Amber 2=Red 3=Green

6.2. Solid Rocker: 4=White 5=Black 6=Red 7=Gray 8=Light Yellow 9=Light Blue

7. Marking Option:

See Marking Drawing For Detail

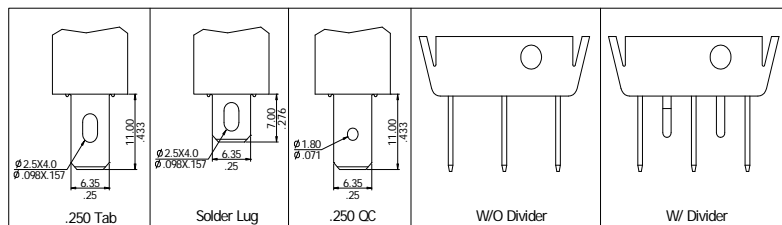
8. Lamp Voltage

0= None 1=125VAC 2=250VAC

Ordering Note:

Some option illustrated below are not listed in the "Ordering Information" chart above. Options denoted by "Special Order" in their descriptions are only offered on a special order basis. Other base and button colors and intermediate amp ratings are also available on a special order basis. Due to ongoing technological advances, consult factory for certification specifics.

Terminal Types:



Marking Options:

